

Paslode Direct Fixings

	Page
Introduction	10 - 11
New era in Gas Technology	12 - 13
Gas Systems	
IM360Ci Lithium Gas Framing Nailer	14 - 15
NailScrew®	15
IM350+ Lithium Gas Framing Nailer	16 - 17
PPN35Ci Lithium Gas Positive Placement Nailer	18 - 19
IM65 F16 Lithium Gas Straight Brad Nailer	20 - 21
IM65A F16 Lithium Gas Angled Brad Nailer	22 - 23
IM45 GN Gas Multi-Purpose Plastic Coil Nailer	24 - 25
IM200 Roofing Nailer Nail Fuel Packs ONLY	25
IM50 F18 Lithium Gas Fine Finish Brad Nailer	26
IM200/50 S16 Gas Stapler	27

CONSTRUCTION INNOVATION, RELIABILITY & EXPERTISE FOR OVER 75 YEARS!

Paslode has been driving change in timber construction since 1935. Over this time our brand has built an enviable reputation for delivering best-in-class nailing systems, often revolutionising construction methods, reducing labour time whilst increasing product reliability and on-site safety.



Paslode Delivery System

The Paslode delivery system is made up of 3 major components - the tool, nail and gas. Paslode manufacture all components to the highest quality, maintaining and guaranteeing performance only when all parts are used together.

European Safety Standard EN792-13 states for safe operation of Paslode tools, only those fuel cells and consumables identified in the operating manual should be used.

All Paslode nails are hexavalent chromium, cadmium and lead free.

EN792-13
European
Safety
Standard



Eurocode 5 Service Class

Paslode nails meet or exceed corrosion requirements stated in Eurocode 5 (EC5), thus suitable for all applications in service class 1, 2 and 3.

Service Class 1 INDOORS	Service Class 2 INDOORS NOT HEATED, OUTDOORS PROTECTED	Service Class 3 OUTDOORS, EXPOSED TO WEATHER
BRIGHT		
ELECTRO GALV $\geq 12\mu\text{m}$ and GALV-PLUS [®] $\geq 15\mu\text{m}$		
HOT DIPPED GALVANISED $\geq 55\mu\text{m}$		
STAINLESS STEEL - A2 (AISI 304) OR A4 (AISI 316)		

Corrosion Resistance

Paramount in determining the appropriate corrosion resistance of any element of a timber structure is the EC5 requirement to design for a minimum life, normally 50 years (10 years for temporary structures, 100 years for monumental structures or bridges). The Paslode Technical Team have many years of experience in construction applications, nail and service class selection. Please call us if you need further technical advice.



TOOL

Market Leading Tools

Our range of first and second fix tools provide the freedom, flexibility and reliability required in this ever demanding industry.

Our innovative gas tool range is researched, manufactured and tested within our own group of companies, giving us the quality and control needed to adapt to the changing horizon.



NAILS

Premium Fixings

All Paslode nails are Eurocode 5 compliant and were the first nails to achieve CE marking. Technical Data sheets and declaration of performance are available upon request. Characteristic values are calculated or tested according to EN 14592:2008 and A1:2012, except for the Paslode PPN square twist nails which are declared according to ETA-09/0273.

Paslode full round head RounDrive® is now available in over 80% of the range. Unique to Paslode, sight of the full round head nail when installed offers the assurance that a Eurocode 5 compliant nail has been used.

Our new colour coded paper collation system provides easy out of the box Service Class identification and provides a delivery system that reduces blank and misfires, even in poor weather.



GAS

Greener, Cleaner Gas

Paslode **SERIES-i** tools are powered by an intelligent fuel injection system. The fuel injection valve delivers the exact dosage of fuel required for the temperature, giving you the nailing performance in all UK temperatures and minimizing excess gas wastage.

Both IM360Ci & IM350+ fuel cells deliver a high quality lubricant into the tool chamber with each shot. This prevents a high carbon build up within the tool, giving extended service life whilst maintaining the tool at an optimum performance level.



max
13,000
per charge 

**START
& GO[®]**

MAXIMISE
BATTERY
CAPACITY

EMBARK ON A NEW ERA IN GAS TECHNOLOGY

IM360*ci* *Lithium*



UP TO
13,000

SMARTER TOOL. MORE NAILS

The IM360Ci Lithium Cordless Framing Nailer is compact, lightweight and balanced with 25% more power. Increased productivity to get the job done.



1 Works in all weather

Our unique gas technology works in the cold down to -15°C

2 Fuel & battery gauge

One touch control providing instant information

3 On/Off battery with lock position

Secure the battery and tool while not in use

4 Quick charge, long life Lithium battery

Up to 13,000 shots between charges

13% MORE NAILS FOC

Compared to IM350+Box Vs Box Size



1 BATTERY FOR 6 TOOLS

One battery with twice the capacity!
Our Lithium battery that works with:

- IM360Ci Framing Nailer
- IM350+ Framing Nailer
- PPN35Ci Positive Placement Nailer
- IM65 Straight Brad Nailer
- IM65A Angled Brad Nailer
- IM50 Fine Finish Brad Nailer

Li-ion+



Li-ion



NiCAD



UP TO
13,000 SHOTS
PER CHARGE

SHOTS PER CHARGE

IM360Ci

Premium gas driven lithium nailer, with Start & Go® technology



Applications

- Roof battening
- Truss work
- Timber frame
- Cladding
- Stud work
- Joists
- Roof boarding
- Flat roofing
- Overboarding
- Floor boarding
- Panelling
- Shuttering
- Decking
- Hoarding

Features and Benefits

- Premium gas technology lithium nailer with intelligent power saving technology, increasing battery life up to 25%
- One touch LED indicator shows remaining power and fuel
- Quick charge Li-ion+ battery: 13,000 shots per single charge, 200 in just 2 minutes
- Incredible cold weather performance allows users to work down to -15°C
- Market leading power to weight ratio
- Improved aggressive probe
- Easy to use depth adjustment



Product Code

Description	Box Qty	Code
IM360Ci Lithium Framing Nailer	1	010391

Technical Data

Fastener length range	50-90 mm
Product weight with battery	3.80 kg
Dimensions (DxLxW)	381 x 328 x 127 mm
Power	105 J
Magazine capacity	47 fixings
Fuel cell capacity	1250 (-5°C)
Fixings per battery charge	13000 shots
Battery charge time	90 min
Battery type	Lithium
Operating temperature range	-15°C...+49°C
Maximum Cycle rate per hour (fixings)	1000 fixings
Maximum Cycle rate per sec (fixings)	2-3 fixings
Peak Sound Pressure (EN 12549) LpCpeak	138 dB(C)
Sound Pressure Level (EN 12549) Lpa,1s,1m	109 dB(A)
Vibration (EN ISO 8662-11) ahv	3.9 m/s²

Kit Contains

- IM360Ci Lithium
- High impact carry case
- Lithium battery
- Lithium battery charger
- Cleaning solution
- Impulse lubricant
- Safety glasses to EN166:F
- Allen key
- Instruction manual
- Tool schematics
- Safety instructions
- CE Declaration of Conformity



Nail Fuel Packs



— Best in class nails that offer optimum performance and the best quality finish



34° PAPER TAPE BRIGHT NAIL
Indoors, Service Class 1

Ø (mm)	Length (mm)	Shank Type	Fuel Cells	Box Qty	Code
2.8	51	Ring shank	3	3750	142005
2.8	63	Ring shank	3	3750	142011
3.1	75	Ring shank	2	2500	142029
3.1	90	Ring shank	2	2500	142036
3.1	90	Smooth	2	2500	142035



34° PAPER TAPE GALV-PLUS® NAIL
Outdoors protected, Service Class 2

Ø (mm)	Length (mm)	Shank Type	Fuel Cells	Box Qty	Code
2.8	51	Ring shank	3	3750	142007
2.8	51	Ring shank	1	1250	142062
2.8	63	Ring shank	3	3750	142013
2.8	63	Ring shank	1	1250	142063
3.1	63	Ring shank	2	2500	142024
3.1	75	Ring shank	2	2500	142030
3.1	90	Ring shank	2	2500	142038
3.1	90	Smooth	2	2500	142037
3.1	90	Smooth	1	1250	142065



34° PAPER TAPE HOT DIPPED GALVANISED NAIL
Outdoors, Service Class 3

Ø (mm)	Length (mm)	Shank Type	Fuel Cells	Box Qty	Code
2.8	63	Ring shank	3	3750	142014
3.1	63	Ring shank	2	2500	142025
3.1	75	Ring shank	2	2500	142031
3.1	90	Smooth	2	2500	142039
3.1	90	Ring shank	2	2500	142040



34° PAPER TAPE STAINLESS STEEL A2 NAIL
Outdoors, Service Class 3

Ø (mm)	Length (mm)	Shank Type	Fuel Cells	Box Qty	Code
2.8	51	Ring shank	1	1250	142045
2.8	63	Ring shank	1	1250	142047
3.1	80	Ring shank	1	1250	142050



34° PAPER TAPE STAINLESS STEEL A4 NAIL
Outdoors, Service Class 3

Ø (mm)	Length (mm)	Shank Type	Fuel Cells	Box Qty	Code
2.8	63	Ring shank	1	1250	142055

NailScrew® Fuel Packs



— The ability to remove and reinstall, whilst being six times faster than standard wood screws



34° PLASTIC STRIP ELECTROGALV 12µm NAIL
Outdoors protected, Service Class 2

Ø (mm)	Length (mm)	Shank Type	Fuel Cells	Box Qty	Code
2.8	50	NailScrew® (removable)	1	1250	142100
2.8	65	NailScrew® (removable)	1	1250	142102
2.8	75	NailScrew® (removable)	1	1250	142104

DRIVE: TX15. FREE TORX BIT IN EVERY BOX



34° PLASTIC STRIP STAINLESS STEEL A2 NAIL
Outdoors, Service Class 3

Ø (mm)	Length (mm)	Shank Type	Fuel Cells	Box Qty	Code
2.8	50	NailScrew® (removable)	1	1250	142101

DRIVE: TX15. FREE TORX BIT IN EVERY BOX

Accessories

Description	Box Qty	Code
SERIES-i Fuel Cell Blister Pack	1	300348
Li-ion Battery for IM360Ci/IM350+/PPN35Ci/IM65/IM65A/IM50	1	018880
Li-ion Battery Charger for IM360Ci/IM350+/PPN35Ci/IM65/IM65A/IM50	1	018882
No-Mar Cladding Probe	1	013211
Long Magazine for IM90i/IM360Ci	1	013225
No-Mar Cladding Probe Rubber Tip	1	013256
In-car Charger Adaptor	1	900507
Impulse & Pulsa Cleaning Kit	1	013690
Impulse Cleaner 300ml	1	115251
Impulse Lubricating Oil	1	401482
Safety Glasses to EN166:F	1	014121
Tool Carry Case	1	014977



300348



013211



018880



013690

IM350+ LITHIUM

The IM350+ Lithium gas framing nailer, proven reliable technology for over thirty years



Applications

- Roof battening
- Truss work
- Timber frame
- Cladding
- Stud work
- Joists
- Roof boarding
- Flat roofing
- Overboarding
- Floor boarding
- Panelling
- Shuttering
- Decking
- Hoarding

Features and Benefits

- Quick charge lithium battery: Up to 9,000 shots per single charge
- Increased reliability, accuracy & extended service levels
- Non-slip soft grip handle gives additional user comfort
- Dual action rafter and belt hook
- Excellent weight and balance enables extended work periods with low user fatigue
- Multi-angled teeth nose probe prevents tool sliding and ensures positive placement
- Easy use pinch and slide depth of drive adjustment

On/off battery



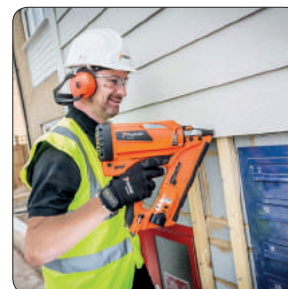
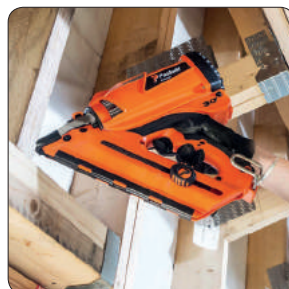
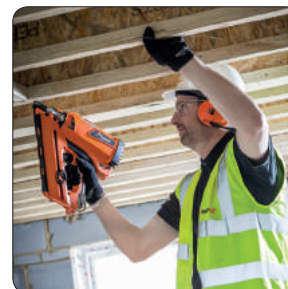
Nose probe



Rafter/belt hook



Pinch and slide depth of drive



Product Code

Description	Box Qty	Code
IM350+ Lithium Framing Nailer	1	905900

Technical Data

Fastener length range	50-90 mm
Product weight	3.3 kg
Dimensions (DxLxW)	370 x 305 x 110 mm
Power	82 J
Magazine capacity	55 fixings
Fuel cell capacity	1100 shots
Fixings per battery charge	9000 fixings
Battery charge time	90 min
Battery type	Lithium
Operating temperature range	0°C...+49°C
Maximum Cycle rate per hour (fixings)	1000 fixings
Maximum Cycle rate per sec (fixings)	2-3 fixings
Peak Sound Pressure (EN 12549) LpCpeak	< 130 dB(C)
Sound Pressure Level (EN 12549) Lpa,1s,1m	102 dB(A)
Vibration (EN ISO 8662-11) ahv	2.6 m/s ²

Kit Contains

- IM350+ Lithium
- High impact carry case
- Lithium battery
- Lithium battery charger
- Safety glasses to EN166:F
- Allen key
- Instruction manual
- Tool schematics
- Safety instructions
- CE Declaration of Conformity



Nail Fuel Packs



— Best in class nails that offer optimum performance and the best quality finish



Paslode Direct Fixings
- Gas Systems



34° PAPER TAPE BRIGHT NAIL

Indoors, Service Class 1

Ø (mm)	Length (mm)	Shank Type	Fuel Cells	Box Qty	Head Style	Code
2.8	51	Ring shank	3	3300	DH	141202
2.8	63	Ring shank	3	3300	DH	141208
3.1	75	Ring shank	2	2200	FRH	141226
3.1	90	Smooth	2	2200	FRH	141233



34° PAPER TAPE GALV-PLUS® NAIL

Outdoors protected, Service Class 2

Ø (mm)	Length (mm)	Shank Type	Fuel Cells	Box Qty	Head Style	Code
2.8	51	Ring shank	3	3300	DH	141204
2.8	51	Ring shank	1	1100	DH	141256
2.8	63	Ring shank	3	3300	DH	141210
2.8	63	Ring shank	1	1100	DH	141259
3.1	63	Ring shank	2	2200	FRH	141221
3.1	63	Ring shank	1	1100	FRH	141263
3.1	75	Ring shank	2	2200	FRH	141227
3.1	90	Smooth	2	2200	FRH	141234



34° PLASTIC STRIP HOT DIPPED GALVANISED NAIL

Outdoors, Service Class 3

Ø (mm)	Length (mm)	Shank Type	Fuel Cells	Box Qty	Head Style	Code
2.8	50	Ring shank	3	3300	DH	141205
2.8	63	Ring shank	3	3300	DH	141211
2.8	63	Ring shank	1	1100	FRH	141260
3.1	63	Ring shank	2	2200	FRH	141222
3.1	75	Ring shank	2	2200	FRH	141228
3.1	75	Ring shank	1	1100	FRH	141265
3.1	90	Smooth	2	2200	FRH	141235
3.1	90	Smooth	1	1100	FRH	141267
3.1	90	Unilock	2	2200	FRH	141236



34° PAPER TAPE STAINLESS STEEL A2 NAIL

Outdoors, Service Class 3

Ø (mm)	Length (mm)	Shank Type	Fuel Cells	Box Qty	Head Style	Code
2.8	51	Ring shank	1	1100	DH	141257
2.8	63	Ring shank	1	1100	DH	141261
3.1	80	Ring shank	1	1100	FRH	141266

○ FRH = Full Round Head ◐ DH = D Head (Clipped)



34° PAPER TAPE HARDENED STEEL BLACK NAILS

Outdoors, Service Class 3

Ø (mm)	Length (mm)	Shank Type	Fuel Cells	Box Qty	Code
2.5	50	Ring shank	2	2200	141200

Accessories

Description	Box Qty	Code
No-mar Work Contact Element Adaptor Kit (Butterfly clip)	1	012082
Li-ion Battery for IM360Ci/IM350+/PPN35Ci/IM65/IM65A/IM50	1	018880
Li-ion Battery Charger for IM360Ci/IM350+/PPN35Ci/IM65/IM65A/IM50	1	018882
In-car Charger Adaptor	1	900507
Standard Fuel Cell Blister Pack Pink Yellow	2	300346
Impulse Cleaner 300ml	1	115251
Impulse & Pulsa Cleaning Kit	1	013690
Impulse Lubricating Oil	1	401482
AC/DC Adaptor	1	210660
IM350+ Li-ion Tool Carry Case	1	905607



Accessories For IM350+ (Non Lithium)

Description	Box Qty	Code
Standard Fuel Cell Blister Pack Pink Yellow	2	300346
Ni-Cd/Ni-MH Battery Charger Base	1	035460
In-car Charger Adaptor	1	900507
Impulse & Pulsa Cleaning Kit	1	013690
Impulse Lubricating Oil	1	401482
Impulse Cleaner 300ml	1	115251
No-mar Work Contact Element Adaptor Kit (Allen key type depth of drive)	1	404705
No-mar Work Contact Element Adaptor Kit (Butterfly clip)	1	012082
AC/DC Adaptor	1	210660
Ni-MH Oval Battery for Paslode Impulse Tools	1	018890
Safety Glasses to EN166:F	1	014121
IM350+ /IM350 Non Li-ion Tool Carry Case	1	014978

PPN35Ci

Positive placement nailer ideal for the installation of metal joist hangers and brackets



Applications

- Joist hangers
- Sole brackets
- Connector plates
- Truss clips
- Restraint straps
- Z-Clips

Features and Benefits

- Fires up to 3 nails per second, faster than any hammer in the world
- Quick charge lithium battery provides up to 13,000 shots per single charge, 200 in just 2 minutes
- Incredible cold weather performance allows users to work down to -15°C
- Premium gas technology lithium nailer with intelligent power saving technology, increasing battery life up to 25%
- One touch LED indicator shows remaining power and fuel
- Easy to use tool free adjustable depth of drive

Innovative sensor



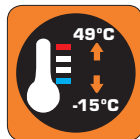
Hole locator probe



Long life battery



All weather



Product Code

Description	Box Qty	Code
PPN35Ci Lithium Positive Placement Nailer	1	014095

Technical Data

Fastener length range	35 mm
Product weight with battery	4.00 kg
Dimensions (DxLxW)	384 x 328 x 127 mm
Power	95 J
Magazine capacity	29 fixings
Fuel cell capacity	1250 (-5°C)
Fixings per battery charge	13000 shots
Battery charge time	90 min
Battery type	Lithium
Operating temperature range	-15°C...+49°C
Maximum Cycle rate per hour (fixings)	1000 fixings
Maximum Cycle rate per sec (fixings)	2-3 fixings
Peak Sound Pressure (EN 12549) LpCpeak	137 dB(C)
Sound Pressure Level (EN 12549) Lpa,1s,1m	111 dB(A)
Vibration (EN ISO 8662-11) ahv	3.9 m/s²

Kit Contains

- PPN35Ci Lithium
- High impact carry case
- Lithium battery
- Lithium battery charger
- Cleaning solution
- Impulse lubricant
- Safety glasses to EN166:F
- Allen key
- Instruction manual
- Tool schematics
- Safety instructions
- CE Declaration of Conformity



Nail Fuel Packs

— CE compliant hardened twist nails for nailing connectors and hangers into solid wood



34° PAPER TAPE ELECTROGALV 12µm NAIL
Outdoors protected, Service Class 2

Ø (mm)	Length (mm)	Shank Type	Fuel Cells	Box Qty	Code
3,4	35	Twisted	2	2500	141185
3,4	35	Twisted	1	1250	141189

Accessories

Description	Box Qty	Code
In-car Charger Adaptor	1	900507
Probe Kit for PPN35Ci/PPN35i	1	014099
SERIES-i Fuel Cell Blister Pack	1	300348
Li-ion Battery for IM360Ci/IM350+/PPN35Ci/IM65/IM65A/IM50	1	018880
Li-ion Battery Charger for IM360Ci/IM350+/PPN35Ci/IM65/IM65A/IM50	1	018882
Impulse & Pulsa Cleaning Kit	1	013690
Impulse Cleaner 300ml	1	115251
Impulse Lubricating Oil	1	401482
Safety Glasses to EN166:F	1	014121
Tool Carry Case	1	014977



018880



018882



013690



014099



IM65 F16 LITHIUM

Premium gas driven finish nailer, with Lithium technology



Applications

- Architraves
- Skirting boards
- Tongue and groove panelling
- Door stops
- Stair rails
- Window casing
- Dado rail
- Beading

Features and Benefits

- Quick charge lithium battery provides up to 10,000 shots per single charge (90 mins)
- Improved weight and balance allows user to manoeuvre into tight spaces and work fatigue-free
- Easy use tool free depth adjustment
- Reversible belt hook and on/off battery lock position
- Quick clear nose cover provides easy access in the unlikely event of a jam
- Nail lockout prevents blank firing and minimises wood damage
- Easy rear loading magazine holds 2 strips of brads



Product Code

Description	Box Qty	Code
IM65 Lithium F16 Straight Brad Nailer	1	013323

Technical Data

Fastener length range	16-63 mm
Product weight with battery	2.10 kg
Dimensions (DxLxW)	301 x 288 x 90 mm
Power	30 J
Magazine capacity	100 fixings
Fuel cell capacity	1000
Fixings per battery charge	10000 shots
Battery charge time	90 min
Battery type	Lithium
Operating temperature range	+5°C...+49°C
Maximum Cycle rate per hour (fixings)	1000 fixings
Maximum Cycle rate per sec (fixings)	2-3 fixings
Peak Sound Pressure (EN 12549) LpCpeak	< 130 dB(C)
Sound Pressure Level (EN 12549) Lpa,1s,1m	103 dB(A)
Vibration (EN ISO 8662-11) ahv	2.5 m/s ²

Kit Contains

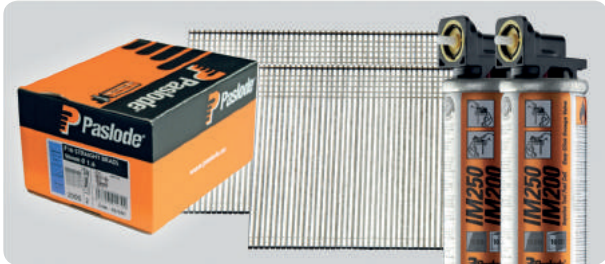
- IM65 Lithium
- Short brads kit
- High impact carry case
- Lithium battery
- Lithium battery charger
- Cleaning solution
- Impulse lubricant
- Safety glasses to EN166:F
- Allen key
- Instruction manual
- Tool schematics
- Safety instructions
- CE Declaration of Conformity



Brad Fuel Packs



— High quality manufacture, with specific glue designed not to fracture into pieces if accidentally dropped



F16 ELECTROGALV 3µm BRADS
Straight - 1.6 mm wire - Indoors.

Length (mm)	Fuel Cells	Box Qty	Code
16	2	2000	921585
19	2	2000	921586
25	2	2000	921587
32	2	2000	921588
38	2	2000	921589
45	2	2000	921590
50	2	2000	921591
63	2	2000	921592



F16 STAINLESS STEEL A2 BRADS
Straight - 1.6 mm wire - Outdoors.

Length (mm)	Fuel Cells	Box Qty	Code
25	2	2000	921593
32	2	2000	921594
50	2	2000	921595
63	2	2000	921596

Accessories

Description	Box Qty	Code
Li-ion Battery for IM360Ci/IM350+/PPN35Ci/IM65/IM65A/IM50	1	018880
Li-ion Battery Charger for IM360Ci/IM350+/PPN35Ci/IM65/IM65A/IM50	1	018882
Nose tips	3	219236
Impulse & Pulsa Cleaning Kit	1	013690
Impulse Cleaner 300ml	1	115251
Mini Fuel Cell Blister Pack Yellow	2	300341
Safety Glasses to EN166:F	1	014121
In-car Charger Adaptor	1	900507
Impulse Lubricating Oil	1	401482
IM65 / IM65A Tool Carry Case	1	014975



300341



018880



018882



013690



IM65A F16 LITHIUM

Premium gas driven angled finish nailer, with lithium technology



Applications

- Architraves
- Skirting boards
- Tongue and groove panelling
- Door stops
- Window casing
- Dado rail
- Beading
- Stair rails

Features and Benefits

- No-mar contact with sight lines and angled magazine aids accurate placement and prevents the need for additional fixings
- Quick charge lithium battery provides up to 10,000 shots per single charge (90 mins)
- Improved weight and balance allows user to manoeuvre into tight spaces and work fatigue-free
- Easy use tool free depth adjustment
- Reversible belt hook and on/off battery lock position
- Quick clear nose cover provides easy access in the unlikely event of a jam
- Nail lockout prevents blank firing and minimises wood damage
- Easy rear loading magazine holds 2 strips of brads

Optimum line of sight



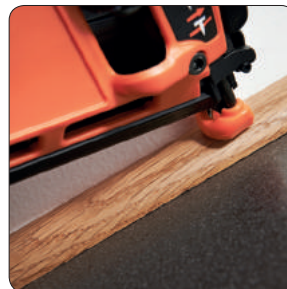
Quick charge long life battery



Reversible belt hook



Tool free depth adjuster



Product Code

Description	Box Qty	Code
IM65A Lithium F16 Angled Brad Nailer	1	013313

Technical Data

Fastener length range	32-64 mm
Product weight with battery	2.00 kg
Dimensions (DxLxW)	303 x 288 x 90 mm
Power	30 J
Magazine capacity	100 fixings
Fuel cell capacity	1000
Fixings per battery charge	10000 shots
Battery charge time	90 min
Battery type	Lithium
Operating temperature range	+5°C...+49°C
Maximum Cycle rate per hour (fixings)	1000 fixings
Maximum Cycle rate per sec (fixings)	2-3 fixings
Peak Sound Pressure (EN 12549) Lp,1s,1m	131 dB(C)
Sound Pressure Level (EN 12549) Lpa,1s,1m	105 dB(A)
Vibration (EN ISO 8662-11) ahv	2.8 m/s²

Kit Contains

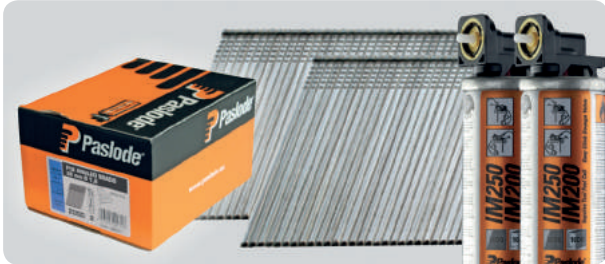
- IM65A Lithium
- High impact carry case
- Lithium battery
- Lithium battery charger
- Cleaning solution
- Impulse lubricant
- Safety glasses to EN166:F
- Allen key
- Instruction manual
- Tool schematics
- Safety instructions
- CE Declaration of Conformity



Brad Fuel Packs

EC5

— High quality manufacture with specific glue designed not to fracture into pieces if accidentally dropped



AF16 ELECTROGALV 3µm BRADS
20° angled - 1.6 mm wire - Indoors.

Length (mm)	Fuel Cells	Box Qty	Code
32	2	2000	300270
38	2	2000	300271
45	2	2000	300272
51	2	2000	300273
63	2	2000	300274



AF16 STAINLESS STEEL A2 BRADS
20° angled - 1.6 mm wire - Outdoors.

Length (mm)	Fuel Cells	Box Qty	Code
32	2	2000	300276
38	2	2000	300277
50	2	2000	300279
64	2	2000	300280

Accessories

Description	Box Qty	Code
Li-ion Battery Charger for IM360Ci/IM350+/ PPN35Ci/IM65/IM65A/IM50	1	018882
In-car Charger Adaptor	1	900507
Li-ion Battery for IM360Ci/IM350+/ PPN35Ci/IM65/IM65A/IM50	1	018880
Panelling Probe for IM65A	1	018930
Nose Tip	1	902425
Impulse & Pulsa Cleaning Kit	1	013690
Impulse Cleaner 300ml	1	115251
Impulse Lubricating Oil	1	401482
Mini Fuel Cell Blister Pack Yellow	2	300341
Safety Glasses to EN166:F	1	014121
IM65 / IM65A Tool Carry Case	1	014975



300341



018880



018882



013690



Paslode Direct Fixings
- Gas Systems

IM45 GN

The first lightweight and compact multi-purpose cordless coil nailer



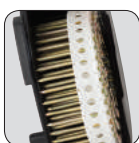
Applications

- Metal roof installation
- Flashing
- Edge protection
- Packaging
- TV and film set construction
- Overboarding
- Fencing

Features and Benefits

- Unique delivery system is in a class of its own. Simple yet versatile, the collation provides a platform to suit many applications
- Delivers a perfect flush finish every time
- High capacity 125 nail magazine, which increases productivity with less user down time
- Tool free adjustable depth of drive prevents drift resulting in a consistent desired finish
- Patented last nail lock out system stops the tool from firing when empty, preventing tool damage
- Optimised nose design and clear line of sight aids accurate fixings, even in tight spaces
- Transparent magazine lid allows clear visibility of remaining nails

Light and versatile



Perfect flush finish



High nail capacity



No debris nail collation



Product

Description	Box Qty	Code
IM45 GN Multi-Purpose Plastic Coil Nailer	1	018606

Technical Data

Fastener length range	25-45 mm
Product weight	2.87 kg
Dimensions (DxLxW)	335 x 296 x 135 mm
Power	30 J
Magazine capacity	125 fixings
Fuel cell capacity	1000
Fixings per battery charge	2200
Battery charge time	135 min
Battery type	NiMH
Operating temperature range	+7°C...+40°C
Maximum Cycle rate per hour (fixings)	1000
Maximum Cycle rate per sec (fixings)	2 fixings
Peak Sound Pressure (EN 12549) LpCpeak	< 130 dB(C)
Sound Pressure Level (EN 12549) Lpa,1s,1m	99 dB(A)
Vibration (EN ISO 8662-11) ahv	2 m/s ²

Kit Contains

- IM45 GN
- High impact carry case
- 2 x batteries
- Battery charger
- Cleaning solution
- Impulse lubricant
- Safety glasses to EN166:F
- 2 x no-mar rubber tips
- Allen key
- Instruction manual
- Tool schematics
- Safety instructions
- CE Declaration of Conformity



Nail Fuel Packs



— Unique full head design offers optimum performance & the best quality finish for metal roofing applications



0° PLASTIC COIL ELECTROGALV 12µm NAIL
Outdoors protected, Service Class 2

Ø (mm)	Length (mm)	Shank Type	Fuel Cells	Box Qty	Code
2,5	45	Unilock	1	750	142208



0° PLASTIC COIL HOT DIPPED GALVANISED NAIL
Outdoors, Service Class 3

Ø (mm)	Length (mm)	Shank Type	Fuel Cells	Box Qty	Code
2,8	25	Ring shank	1	1000	142200



0° PLASTIC COIL STAINLESS STEEL A2 NAIL
Outdoors, Service Class 3

Ø (mm)	Length (mm)	Shank Type	Fuel Cells	Box Qty	Code
2,5	35	Ring shank	1	1000	142207
2,8	25	Ring shank	1	1000	142201
2,8	32	Ring shank	1	1000	142202

IM200

Nail Fuel Packs Only



STAINLESS STEEL A2 NAIL
Outdoors, Service Class 3

Ø (mm)	Length (mm)	Shank Type	Fuel Cells	Box Qty	Code
2,8	25	Ring shank	1	2000	141176

NailScrew® Fuel Packs



— The ability to remove and reinstall, whilst being six times faster than standard wood screws



0° PLASTIC COIL ELECTROGALV 12µm NAIL
Outdoors protected, Service Class 2

Ø (mm)	Length (mm)	Shank Type	Fuel Cells	Box Qty	Code
2,5	35	NailScrew® (removable)	1	1000	142205
2,5	40	NailScrew® (removable)	1	750	142206

Accessories

Description	Box Qty	Code
Ni-Cd/Ni-MH Battery Charger Base	1	035460
In-car Charger Adaptor	1	900507
IM45 GN Fuel Cells (2 Pack)	2	575722
Safety Glasses to EN166:F	1	014121
Impulse Cleaner 300ml	1	115251
Impulse & Pula Cleaning Kit	1	013690
Ni-MH Oval Battery for Paslode Impulse Tools	1	018890
Impulse Lubricating Oil	1	401482
IM45 Tool Carry Case	1	014972



575722



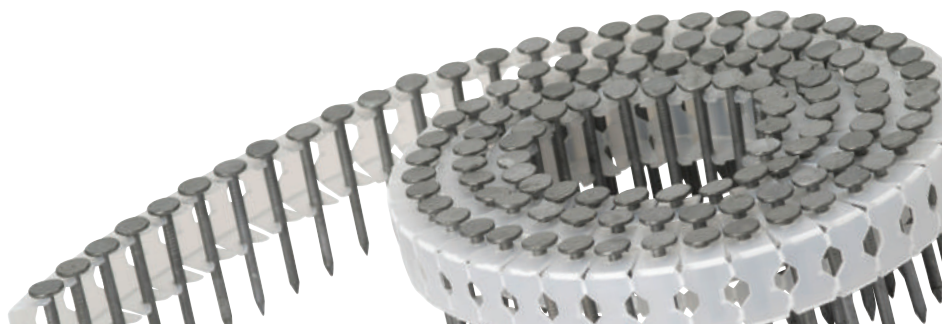
018890



115251



013690



IM50 F18 LITHIUM

Premium gas driven fine finish nailer, with Lithium technology



LI-ION



Applications

- Skirting boards
- Cabinet work
- Furniture trim
- Glazing bead
- Exhibition display work
- Shop fitting remodelling
- Beading

Features and Benefits

- Quick charge lithium battery: Up to 10,000 shots per full charge
- Improved weight & balance allows any user to manoeuvre into tight spaces, fatigue free
- Easy use tool free depth adjustment for consistent excellent finishing
- Optimum line of sight & no-mar tip: accuracy in fixings

Product Code

Description	Box Qty	Code
IM50 Lithium F18 Fine Finish Brad Nailer	1	013333

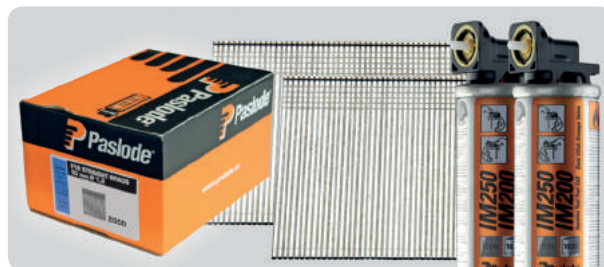
Technical Data

Fastener length range	16-50 mm
Product weight with battery	2.10 kg
Dimensions (DxLxW)	307 x 288 x 90 mm
Power	25 J
Magazine capacity	100 fixings
Fuel cell capacity	1000
Fixings per battery charge	10000 shots
Battery charge time	90 min
Battery type	Lithium
Operating temperature range	+5°C...+49°C
Maximum Cycle rate per hour (fixings)	1000 fixings
Maximum Cycle rate per sec (fixings)	2-3 fixings
Peak Sound Pressure (EN 12549) LpCpeak	< 130 dB(C)
Sound Pressure Level (EN 12549) Lpa,1s,1m	101 dB(A)
Vibration (EN ISO 8662-11) ahv	2.3 m/s ²

Brad Fuel Packs

EC5

- Thinner 18 gauge brad for discreet, fine finish nailing



F18 ELECTROGALV 3µm BRADS
Straight - 1.2 mm wire - Indoors.

Length (mm)	Fuel Cells	Box Qty	Code
16	2	2000	395192
25	2	2000	395193
32	2	2000	395194
38	2	2000	395195
50	2	2000	395196

Kit Contains

- IM50 Lithium
- High impact carry case
- Lithium battery
- Lithium battery charger
- Cleaning solution
- Impulse lubricant
- Safety glasses to EN166:F
- Allen key
- Instruction manual
- Tool schematics
- Safety instructions
- CE Declaration of Conformity



Accessories

Description	Box Qty	Code
Li-ion Battery for IM360Ci/IM350+/PPN35Ci/IM65/IM65A/IM50	1	018880
Li-ion Battery Charger for IM360Ci/IM350+/PPN35Ci/IM65/IM65A/IM50	1	018882
Mini Fuel Cell Blister Pack Yellow	2	300341
Impulse & Pulsa Cleaning Kit	1	013690
Impulse Cleaner 300ml	1	115251
Safety Glasses to EN166:F	1	014121
IM50 Hard Contact Element	1	901048
IM50 Soft Contact Element	1	901067
Impulse Lubricating Oil	1	401482
In-car Charger Adaptor	1	900507
IM50 Tool Carry Case	1	014975



IM200/50 S16

Cordless stapler for fixing S16 staples



Applications

- Overboarding
- Packaging
- Fencing
- Wood
- Plasterboard

Features and Benefits

- Cordless, self powered: No hoses, compressors or setting up time
- Wide range of S16 staples
- Quick clear feature: Allowing easy access to nose, reducing down time
- Belt hook

Product Code

Description	Box Qty	Code
IM200 / 50 S16 Stapler	1	900078

Technical Data

Fastener length range	19-51 mm
Product weight with battery	3.10 kg
Dimensions (DxLxW)	318 x 343 x 105 mm
Power	35 J
Magazine capacity	150 fixings
Fuel cell capacity	1000
Fixings per battery charge	4000 shots
Battery charge time	120 min
Battery type	NiMh
Operating temperature range	+5°C...+49°C
Maximum Cycle rate per hour (fixings)	500 fixings
Maximum Cycle rate per sec (fixings)	2 fixings
Peak Sound Pressure (EN 12549) LpCpeak	< 130 dB(C)
Sound Pressure Level (EN 12549) Lpa,1s,1m	108 dB(A)
Vibration (EN ISO 8662-11) ahv	2.5 m/s ²

Staple Fuel Packs



— Standard quality staples for medium to heavy duty stapling applications



S16 ELECTROGALV 3µm STAPLES

13mm crown width - 1,6x1,4mm wire - Indoors, Service Class 1

Length (mm)	Point Type	Fuel Cells	Box Qty	Code
19	Chisel	3	3000	054520
25	Divergent	3	3000	012306
35	Chisel	3	3000	054522
51	Chisel	3	3000	012302

Kit Contains

- IM200/50 S16
- High impact carry case
- 2 x Batteries
- Battery charger
- Cleaning solution
- Impulse lubricant
- Safety glasses to EN166:F
- Allen key
- Instruction manual
- Tool schematics
- Safety instructions
- CE Declaration of Conformity



Accessories

Description	Box Qty	Code
Ni-Cd/Ni-MH Battery Charger Base	1	035460
In-car Charger Adaptor	1	900507
Impulse & Pula Cleaning Kit	1	013690
Impulse Cleaner 300ml	1	115251
AC/DC Adaptor	1	210660
Mini Fuel Cell Blister Pack Yellow	2	300341
Ni-MH Round Battery for Paslode Impulse Tools	1	018891
Impulse Lubricating Oil	1	401482
Safety Glasses to EN166:F	1	014121

